



Decision Support Framework for Mainstreaming and Scaling out SLM

WEBINAR of the Regional Food Systems Programme RFS – IAP
5 May 2021



Food and Agriculture
Organization of the
United Nations



World Overview of Conservation Approaches and Technologies



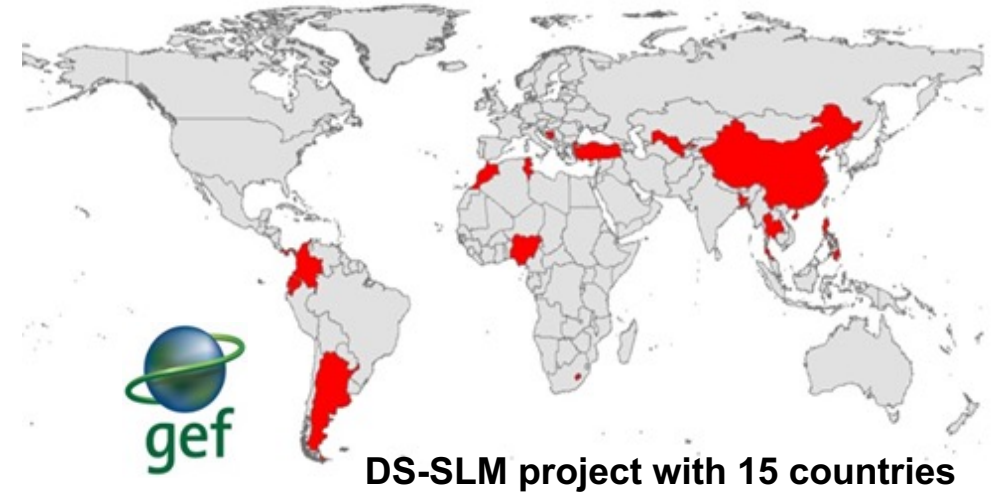
Decision Support Framework for Mainstreaming and Scaling-out SLM

How to make use of evidence to support mainstreaming and scaling-out of SLM practices and remove local, national and regional barriers?

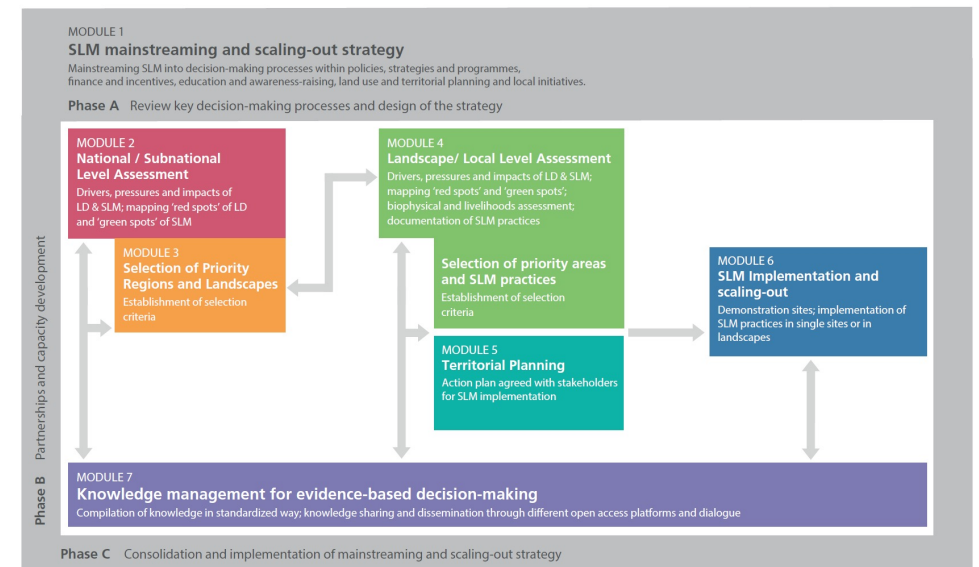
Decision Support Framework developed which:

- guides countries in the process of **evidence-based decision-making for SLM** from the national to the landscape/local level
- follows **seven modules with proposed tools and methods**
- **supports** on-the-ground implementation and **scaling-out** of SLM practices

Innovativeness: embeds evidence in an overall strategy for mainstreaming and scaling-out SLM



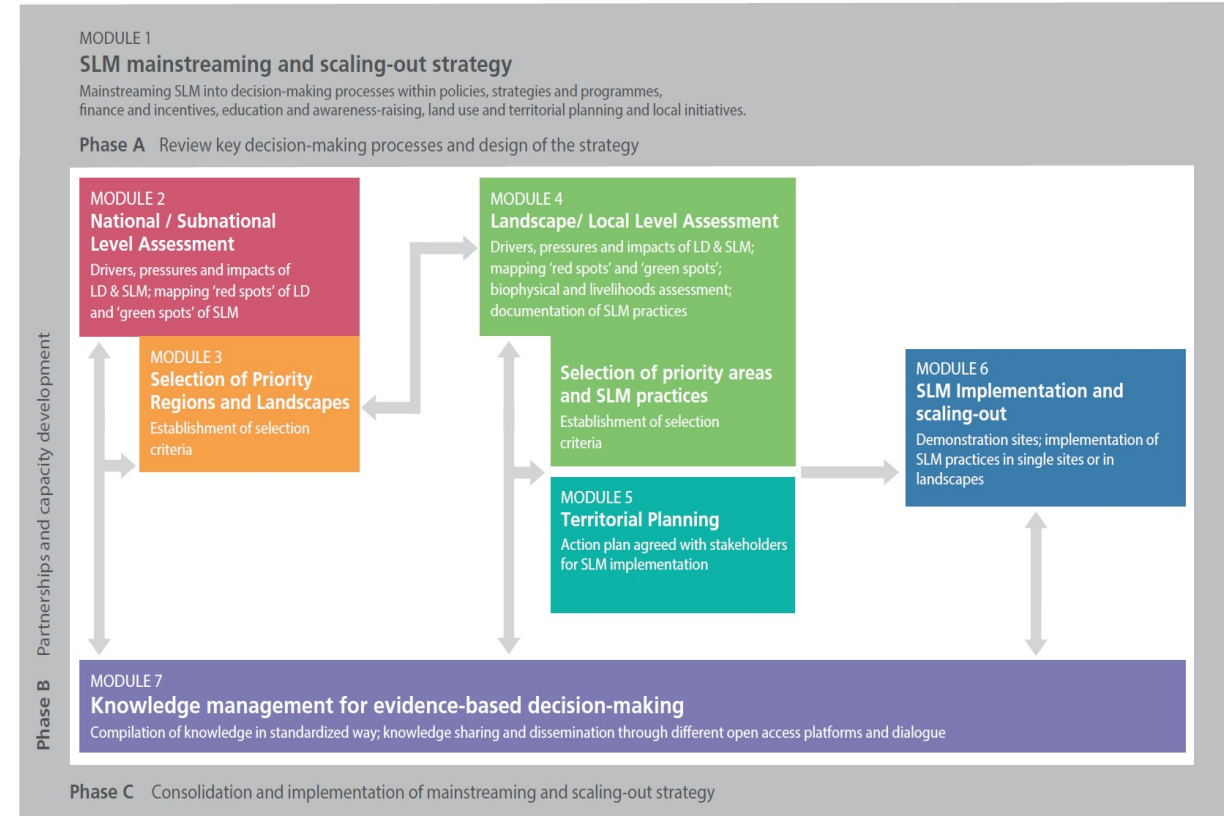
Decision Support Framework for SLM mainstreaming and scaling-out



Decision Support Framework for Mainstreaming and Scaling out SLM

The DSF contains the following **features**:

- is **flexible**, and can be tailored to countries' needs and contexts;
- offers, through its **modular format**, different entry points depending on countries' previous activities, existing data, available resources and gaps;
- is applicable at, and links, **different scales**;
- supports **multi-sectoral** and **multi-disciplinary processes**, breaking silos between sectors;
- encourages and facilitates **networking, dialogue, and partnerships**;
- considers **use and management of knowledge** as an intrinsic part of the process.



Decision Support Framework for Mainstreaming and Scaling out SLM

MODULE 1

SLM mainstreaming and scaling-out strategy

Mainstreaming SLM into decision-making processes within policies, strategies and programmes, finance and incentives, education and awareness-raising, land use and territorial planning and local initiatives.

Phase A Review key decision-making processes and design of the strategy

- strategy to depart from **barriers** at local level, be **simple** and focus on **few objectives and activities**
- prioritize decision-making processes which facilitate SLM implementation and scaling out **beyond a project**



Phase C Consolidation and implementation of mainstreaming and scaling-out strategy

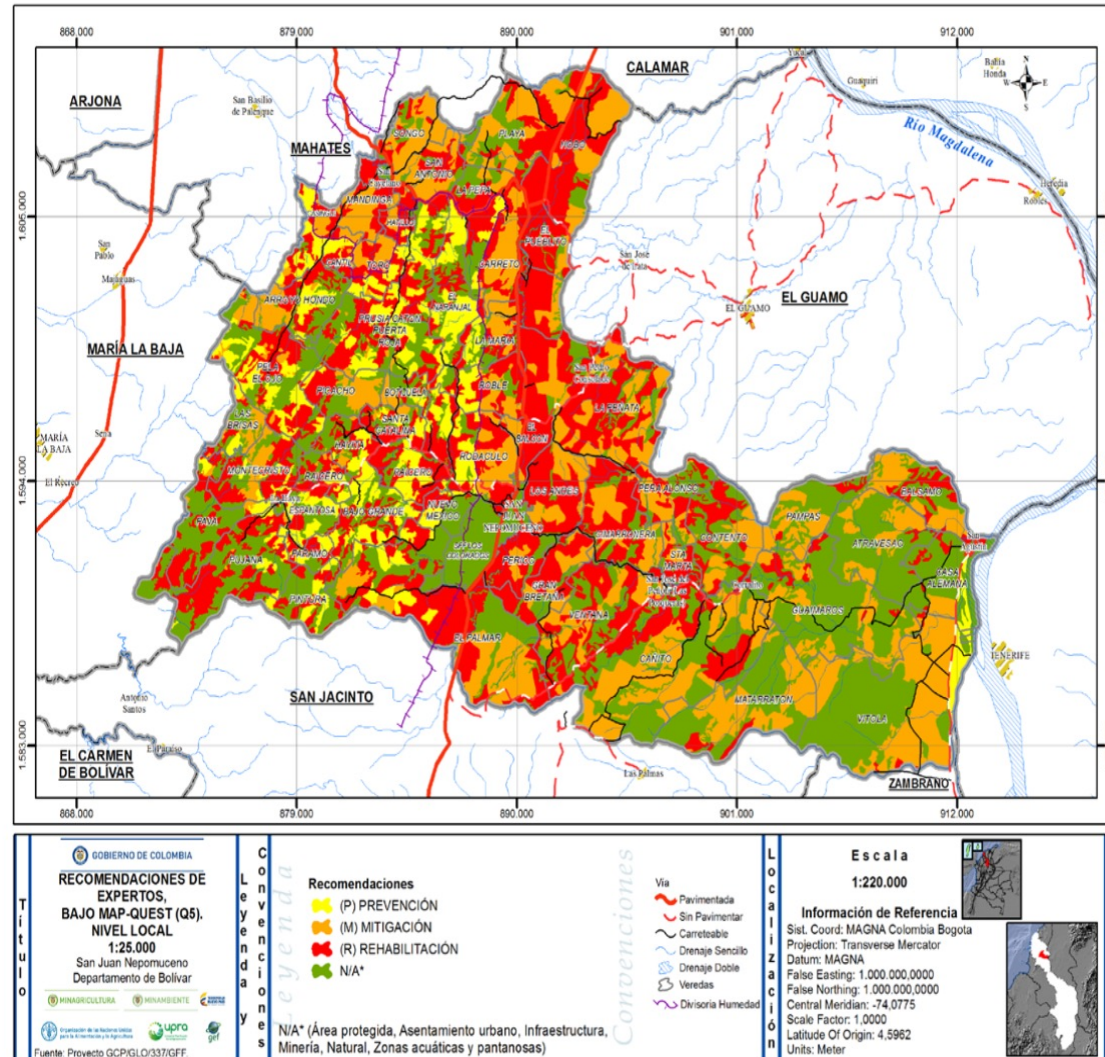
Decision Support Framework for Mainstreaming and Scaling out SLM



Decision Support Framework for Mainstreaming and Scaling out SLM



Decision Support Framework for Mainstreaming and Scaling out SLM



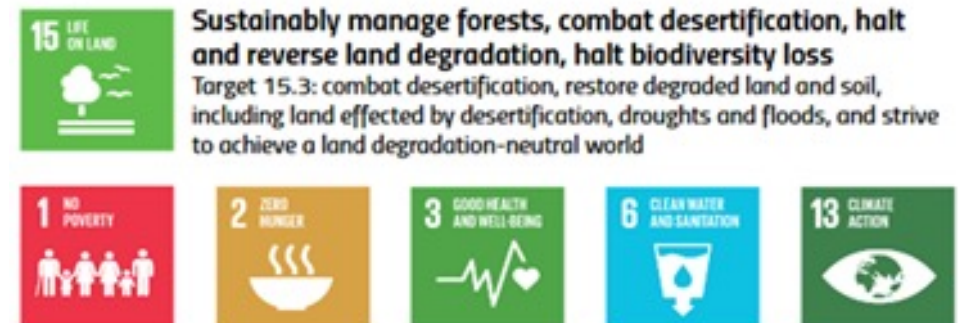
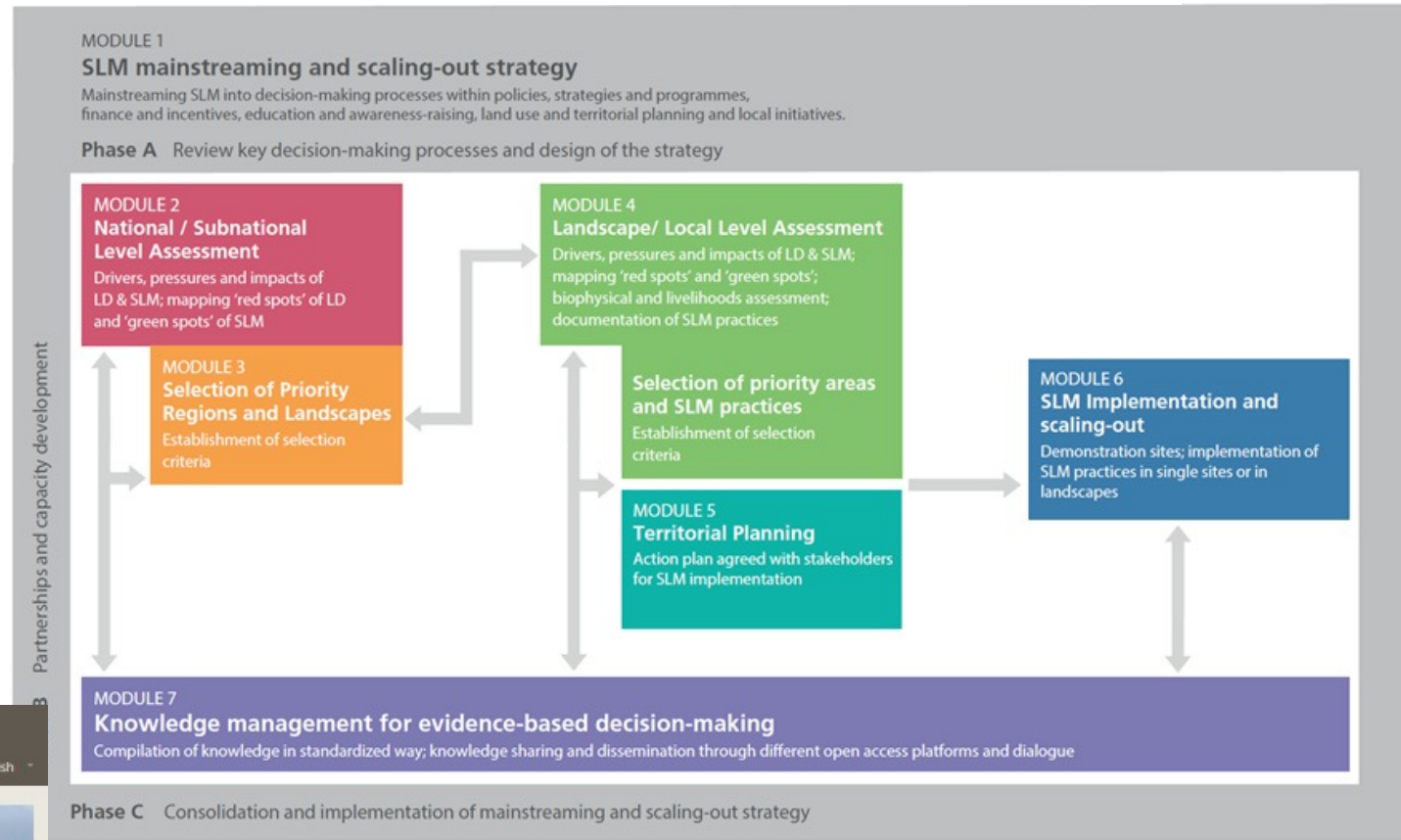
MODULE 6
SLM Implementation and scaling-out
Demonstration sites; implementation of SLM practices in single sites or in landscapes



Decision Support Framework for Mainstreaming and Scaling out SLM

Module 7

- compile and share knowledge on **global and national platforms** to ensure evidence-based decisions
- **standardized and harmonized** knowledge management to enable comparisons (e.g. between different Technologies) and facilitate exchange
- share SLM practices on Global **WOCAT SLM Database recommended by UNCCD** for SLM BP reporting





THANK YOU !
MERCI !